



Dover Grey Data Sheet

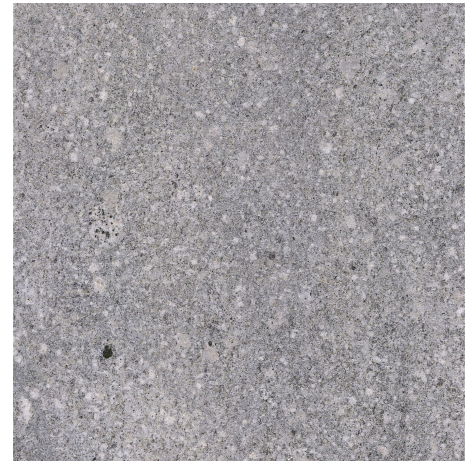
Wet Slip Resistance

Finish	Value	Classification
Exfoliated	66	P5
Sandblasted	64	P5

Analysis

Results

Abrasion Resistance (Ha)	98.1 (±4.1)
Bulk Specific Gravity (Kg/m ³)	2,643 (±2)
Coefficient of Linear Thermal Expansion	7.4x10 ⁻⁶
Crystalline Silica (%)	21
Flexural Strength (MPa)	
Average Dried	16.6 (±0.3)
Average Soaked	13.6 (±0.3)
Luminous Reflectance - Exfoliated Finish (Unsealed)	
Average Dried (Yd)	35.3
Average Soaked (Yw)	17.0
Modulus of Rupture (MPa)	
Average Dried	15.7 (±0.2)
Average Soaked	14.2 (±0.2)
Resistance to Salt Attack (%)	0.01 (±0.05)
Unconfined Compressive Strength (MPa)	
Average Dried	192 (±2.3)
Average Soaked	166 (±2.0)
Water Absorption (%)	
Average by Volume	0.65 (±0.1)
Average by Weight	0.24 (±0.04)



FINISH > SANDBLASTED

Disclaimer: Due to the inherent variability of natural stone, the results are indicative.