



Custom
inlay lid



Traditional Plastic Lid

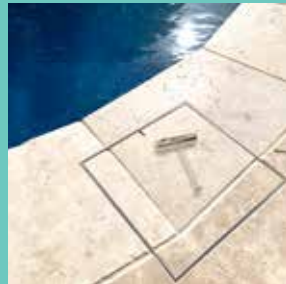
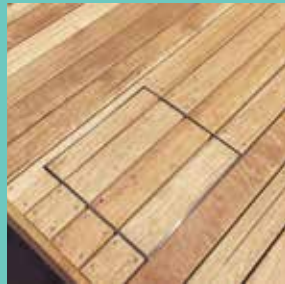
Hidden Skimmer Lid

- ELEGANT FINISH
- POOL SAFE
- HIGH GRADE
- EASY INSTALL

SKIMMER LIDS | ACCESS COVERS | DRAIN COVERS | CONCRETE COVERS

SAFE.
SEAMLESS.
STUNNING.

A new breed of hidden cover
reinventing the landscape.



Sophisticated, seamless covers that disappear into your landscape.

HIDE's innovative lids for skimmer boxes, access points, drains and wet-pour concrete applications are available in a range of sizes to suit most applications where a sophisticated upmarket finish is required.

HIDE lids are designed to carry your selection of tiles, timber or concrete to match the pool surrounds, creating a luxurious, uninterrupted outdoor space.



HIDE Skimmer Lid



WHAT'S IN YOUR KIT

SAFETY KEY

A 316 marine grade stainless steel tool to enable the installed HIDE lid to be safely and easily opened and closed.

HEIGHT ADJUSTER

Used only when additional height is required. Provides up to 5mm extra height if inlay material is not thick enough to achieve a flush finish with the top of the inlay lid.

INLAY LID

A 316L marine grade stainless steel tray, which holds the inlay materials you've chosen e.g. tile, paver, concrete, decking etc.

EDGE PROTECTOR

A 316L marine grade stainless steel frame inserted into a recess within the pool deck. It protects the coping/surrounds from chipping and breaking, when the inlay lid is opened and closed.

A QUICK INITIATION - THE HIDE KIT

HIDE lids are readily installed in new poolscapes or when refurbishing existing landscapes.

Our design allows for easy and affordable installation, on-site by a contractor.

Every kit contains all the components for a no-fuss assembly, resulting in the homeowner having a safe and seamless finish.



HIDE Access Cover



As with all HIDE products, the Access Cover is designed to carry your selection of landscaping material to match the surrounds, allowing the lid to blend seamlessly into your outdoor area.

HIDE Access Covers are available in a selection of sizes and depths.

Access covers provide easy entry to service points such as:

- Bolted trap screw (BTS)
- water table pipe
- water and balance tanks
- taps and irrigation
- valves and meters
- electrical junction box

HIDE recommends its products for use in pedestrian traffic areas only.

HIDE recommends discussing the use of an access cover with your project manager at the beginning of new landscape design.

HIDE Drain covers allow for your chosen landscape material to seamlessly conceal the drain access, resulting in a visually appealing and discreet service cover.

HIDE Drain Cover Kits are designed to suit a water intake compatible with a standard 90mm or 100mm drainage network, providing superior safety and performance.

Consult your drain layer for site water flow requirements.

HIDE recommends its products for use in pedestrian traffic areas only.



Before



HIDE Drain Cover (HDC314-30)

*HIDE
Drain
Cover*

The HIDE Concrete Lid and specially designed Edge Protector, provide the perfect reinforcement for a wet-pour concrete.

The HIDE Concrete kit allows the inlay to be filled and finished at the same time as the pool surrounds. This ensures the cover lid perfectly matches the selected surface finish in both texture and color.

If you are wanting to finish your pool surrounds in a decorative concrete Skimmer Lid, this is the product for you!

After installation, avoid any acid wash contact with your stainless steel.



HIDE Skimmer Cover (HCON342-40)



*HIDE
Concrete
Cover*

NOT ALL SKIMMER LIDS WERE CREATED EQUAL.

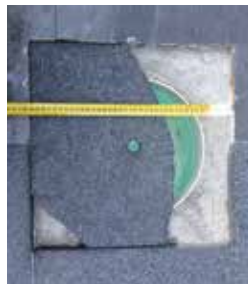
Traditional skimmer lid options have plenty of quality and safety concerns, which can cause serious headaches for homeowners and contractors alike. **What's worse, is that many don't even meet relevant Pool Safety Standards!**

TRADITIONAL PLASTIC OPTION



A cheap plastic lid which is unsightly and requires regular replacement due to sun damage and wear.

LOOSE STONE/TILE OPTION



A brittle option which is often short-lived and quickly becomes unattractive due to damage. Loose stone usually breaks/chips quickly, or causes chipping or damage to the surrounding stone.

A loose stone is often NOT compliant or POOL SAFE.

MUCH MORE TO LOVE

HIDE's beautiful, streamlined finish is an absolute hit with homeowners. The HIDE design also features these major benefits:



ELEGANT FINISH

A totally integrated + flush finish means HIDE lids are essentially invisible.



EASY USE

HIDE lids are compact, and super easy to use.



LONG LIFE

Protect the inlay materials from chipping or breaking for the life of the pool.



HIGH GRADE

316L marine grade stainless steel frames + 10 year warranty!



POOL SAFE

100% compliant with Pool Safety standards.



GOOD PRICE

HIDE kits represent excellent value for money.



SAFETY KEY

- The Safety Key is used to operate all HIDE lids/covers.
- To prevent children accessing the skimmer box, always store the Safety Key out of the reach of children, in a secure location.
- NEVER leave the Safety Key in the lid for any reason. The key is not specified or designed to remain in the lid.
- NEVER carry the full weight of the lid with the Safety Key. Using the key as a handle may damage it and will void your warranty.
- The Key is also constructed from 316 marine grade stainless steel, and is replaceable.



HIDE products are recommended for use in pedestrian traffic areas only. Information correct at time of printing, changes may be made without notice. Modifications and updates can be viewed on our websites: (AUST) www.skimmerlids.com.au (USA) www.skimmercovers.com

Our manufacturing process allows us to [custom make sizes](#) to suit most applications. Please call for more information.



P: 07 3807 2551
M: 0427 270 560
E: admin@skimmerlids.com.au
W: www.skimmerlids.com.au

PROUDLY MANUFACTURED BY:

SKIMMER LIDS
PTY LTD

[f](#) [p](#) [@](#) [h](#) @hideskimmerlids